

SOUTHWEST 8404-25A FLUID END FOR BOMCO F-1600

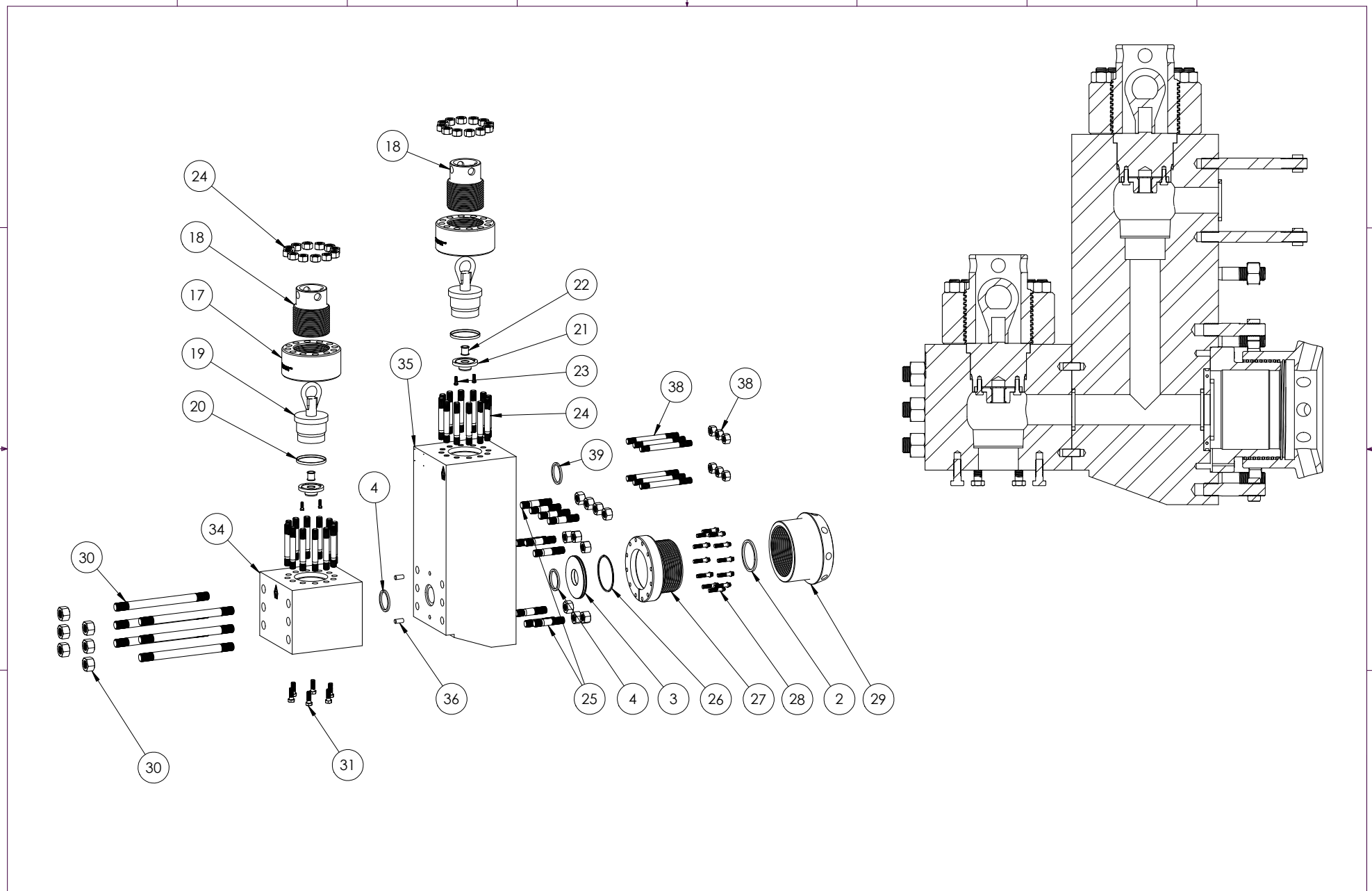
MUD PUMP PERFORMANCE CHART

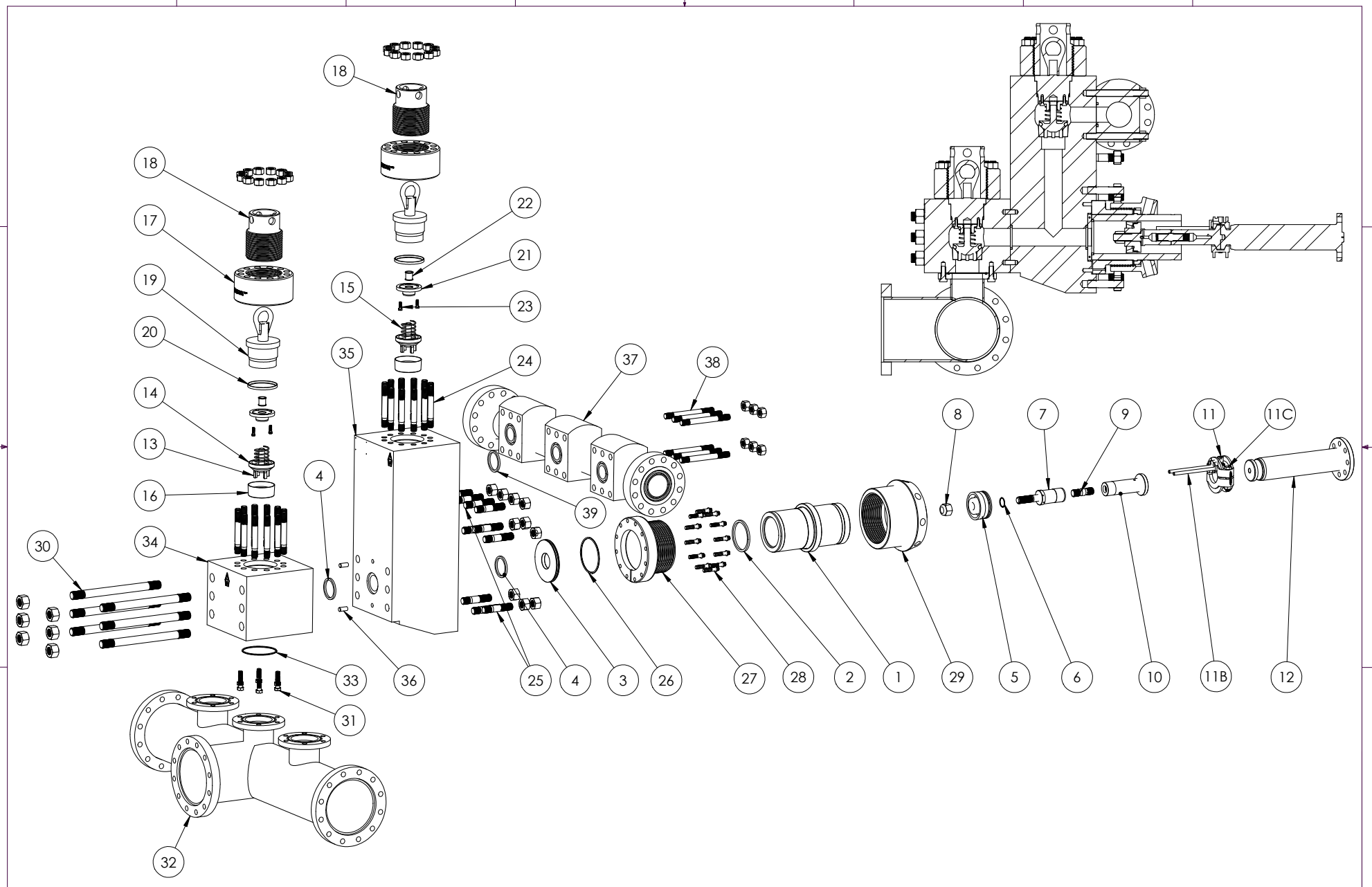
PUMP MODEL	MAX I.H.P.	MAX S.P.M	STROKE LENGTH	LINER SIZE IN INCHES												
				4 ½	4 ¾	5	5 ¼	5 ½	6	6 ¼	6 ½	6 ¾	7	7 ¼	7 ½	
F-1600	1600	120	12"	MAX- P.S.I.	7500	7449	6723	6098	5556	4669	4303	3978	3689	3430	3197	2988
				G.P.R.	2.479	2.762	3.06	3.374	3.703	4.406	4.781	5.171	5.577	5.998	6.434	6.885
				G.P.M. @ 120 R.P.M.	297.4	331.4	367.2	404.8	444.3	528.8	573.7	620.6	669.2	719.7	772	826.2

NOTE: I.H.P.= INPUT HORSE POWER S.P.M.= STROKE PER MINUTE P.S.I.= POUNDS PER SQUARE INCH G.P.R.= GALLONS PER REVOLUTION

*MAX – P.S.I. CALCULATIONS DO NOT EXCEED MAXIMUM FLUID END PRESSURE RATINGS

BASED ON 100% VOLUMETRIC EFFICIENCY AND 90% MECHANICAL EFFICIENCY





FLUID END TYPE	MODEL OF PUMP	SIZE OF PUMP
SOUTHWEST 7500 P.S.I.	BOMCO F-1600	7 1/2" X 12"

ITEM NO.	PART NO.	DESCRIPTION	QTY. REQ'D
	8404-25A	FLUID END ASSEMBLY: (CONSISTS OF ITEMS: 3,4,17,18,19,20,21,22,23,24,25,26,27,28,29,30,31,34,35,36,38,39,41,42)	
1	1376YXX	LINER REFER TO GUIDE FOR ORDERING CHART ON PG. 6 FOR TYPE (G); (Y); AND FOR BORE SIZE (XX)	3
2	2930-XX	LINER SEAL (ALSO AVAILABLE IN URETHANE PART# 2930-XXU)	3
3	8490-28	LINER WEARPLATE (WITH 568-447 O-RING) WHEN USING P-QUIP LRS, USE 8490-34 WEARPLATE ---- SEE PRODUCT BULLETIN SW-PB-103 REV. C	3
4	2988	WEARPLATE AND MODULE SEAL (ALSO AVAILABLE IN URETHANE PART# 2988U)	6
5	XX-BYY	PISTON REFER TO GUIDE FOR ORDERING CHART ON PG. 6 FOR SIZE (XX) AND FOR TYPE (YY)	3
6	568-225	PISTON SEAL	3
7	6278-25	PISTON ROD (WITH ELASTIC STOP NUT)(FOR 2-PIECE STUDDED PISTON ROD ASSEMBLY PART NO. 6284-25A)	3
8	API-4ESN	PISTON ROD NUT	3
9	1290-2	PISTON ROD CONNECTING STUD	3
10	6284-1	SUB ROD	3
11	6274CWY	ROD CLAMP (WITH WATER JACKET)	3
11A	1200H30	HOSE (1/2" X 30" WITH 1/2" MALE X 3/8" MALE CONNECTIONS)	3
11B	1286CWYFP	ROD CLAMP WATER SPRAY MANIFOLD WITH PIPE	3
11C	4020-29	BOLT (7/8-9 GRADE 8 BOLT WITH LOCK NUT AND WASHER)	6
12	1200G74	PONY ROD	3
13	SEE PAGE	VALVE	6
14	SEE PAGE	VALVE INSERT	6
15	SEE PAGE	VALVE SPRING	6
16	SEE PAGE	VALVE SEAT	6
	SWTM1700	HYDRAULIC SEAT PULLER KIT COMPLETE (REFER TO TOOLS SECTION IN CATALOG)	1
17	4488-25	VALVE COVER FLANGE	6
18	4588-25	SCREW GLAND	6
19	4690-25A	PLUG (COMPLETE WITH VALVE GUIDE; BUSHING; AND SCREWS) INCLUDES ITEMS 20, 21, 22, & 23	6
20	P115	HP VALVE COVER PLUG NITRILE SEAL (ALSO AVAILABLE IN URETHANE PART # P115U)	6
21	4788-25R	VALVE GUIDE (COMPLETE WITH BUSHING #4700I)	6
22	4700I	VALVE GUIDE INSERT (ALSO AVAILABLE IN URETHANE PART # 4700IU)	6
23	4018-18	VALVE GUIDE SCREW	12
24	4015-2	VALVE COVER STUD (WITH SW PART# HHN1250-7 1 1/4"-7 HEAVY HEX NUT)	72

FLUID END TYPE	MODEL OF PUMP	SIZE OF PUMP
SOUTHWEST 7500 P.S.I.	BOMCO F-1600	7 1/2" X 12"

ITEM NO.	PART NO.	DESCRIPTION	QTY. REQ'D
25	4017-33	POWER END STUD (WITH SW PART# HHN1500-8 1 1/2"-8 HEAVY HEX NUT)	30
26	568-443	WEARPLATE 'O' RING	3
27	6490-25	LINER RETAINER FLANGE	3
28	4019-51	LINER RETAINER CAPSCREW	72
29	6590-25	LINER RETAINER NUT	3
30	4019-61	SUCTION MODULE STUD (WITH SW PART# HHN1750-8 1 3/4"-8 HEAVY HEX NUT)	18
31	4018-19	SUCTION MANIFOLD CAPSCREW	18
32	8590-6	SUCTION MANIFOLD	1
33	568-442	SUCTION MANIFOLD 'O' RING	3
34	8404-26	SUCTION MODULE	3
35	8404-27	DISCHARGE MODULE	3
36	8488-5	DOWEL PIN	6
37	8376-25MOD	DISCHARGE MANIFOLD	1
38	4019-60	DISCHARGE MANIFOLD STUD (WITH SW PART# HHN1250-7 1 1/4"-7 HEAVY HEX NUT)	18
39	2988	DISCHARGE MANIFOLD SEAL	3
40	6490-25P	LINER RETAINER PULLER	1
41	LW875	LOCKWASHER 7/8	18
42	LW500	LOCKWASHER 1/2	12
	8590-6BFA	BLIND FLANGE IS AVAILABLE FOR CAPPING UNUSED FLANGES ON 8590-6 SUCTION MANIFOLD – (8590-6BFA INCLUDES 8590-6BF BLIND FLANGE AND 568-456 O-RING) SEE SEPARATE PG. FOR DETAILS	

**** POLYURETHANE SEAL AVAILABLE ****